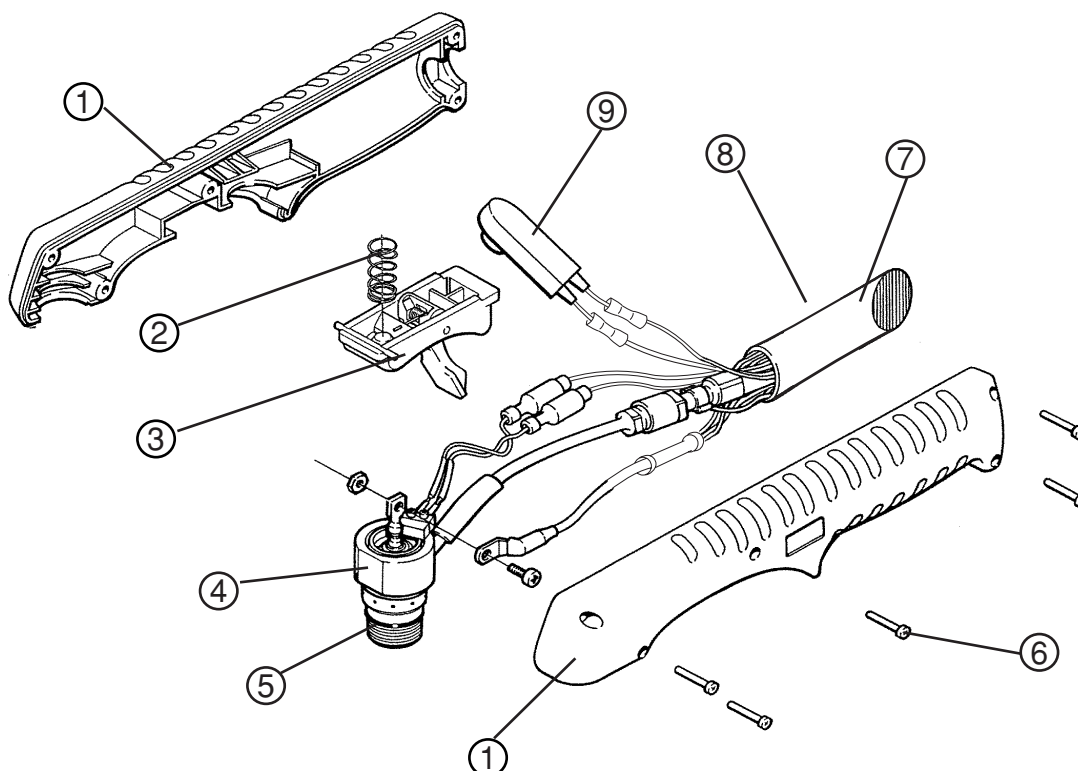


PAC105 Torch Assembly and 20 ft (6.1 m) Torch Lead – 070065

Index No.	Part No.	Description
1	001288	Handle
2	027254	Spring
3	002244	Safety Trigger Assembly
4	120874	Torch Main Body with Switch, PAC105
5	058503	O-Ring: VITON .625 X .070
6	075339	Screws (5), P/S, # 4 X 1/2, PH, RND, S/B
7	128883	Torch Lead Replacement Kit, 20 ft (6.1 m)
8	004764	Retaining Ring, Gutcha
9	005202	Switch, Torch Pushbutton
	120880*	Swirl Ring
	120881*	Electrode
	120882*	Nozzle
	120898*	Shielded Retaining Cap
	120884*	Shield

* See page 4-5 for consumable parts.



Consumable Parts

Part Number	Description
120880.....	Swirl Ring
120881.....	Electrode
120882.....	Nozzle
120883.....	Retaining Cap
120898.....	Shielded Retaining Cap
120884.....	Shield

Shield
120884



Shielded Retaining Cap
120898



Nozzle
120882



Electrode
120881



Swirl Ring
120880



Shielded Consumables

Retaining Cap
120883



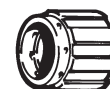
Nozzle
120882



Electrode
120881



Swirl Ring
120880



Unshielded Consumables

For CE compliance, do not use the unshielded consumables

Consumable O-rings



Retaining Cap O-ring
058010



Swirl Ring O-ring (rear view)
058012