

Hypertherm®

powermax600

Hand torch parts

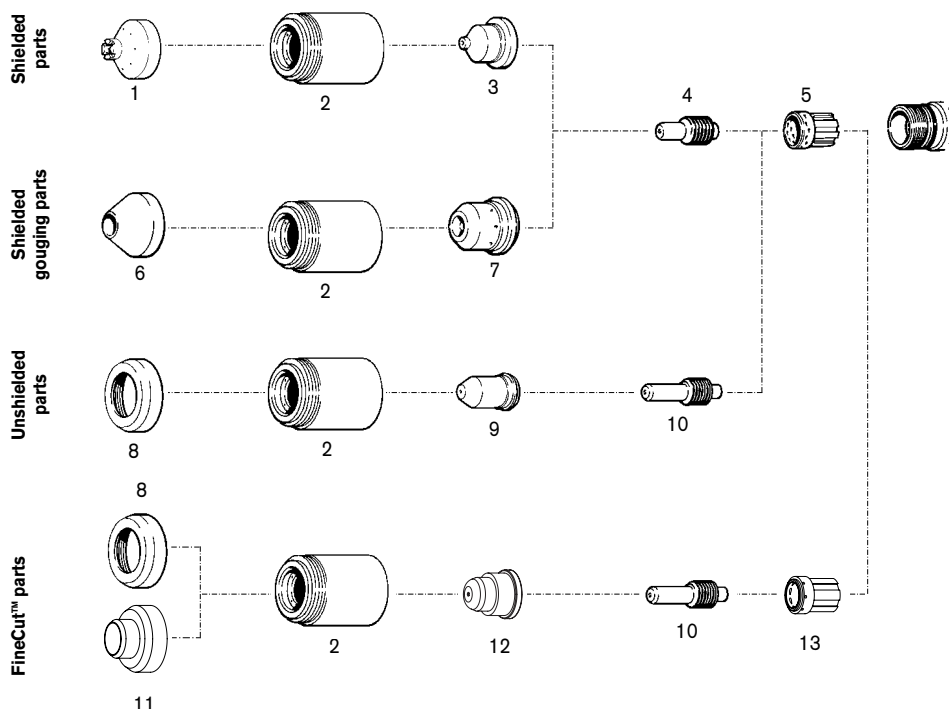
PAC123T consumables



Powermax600 torch



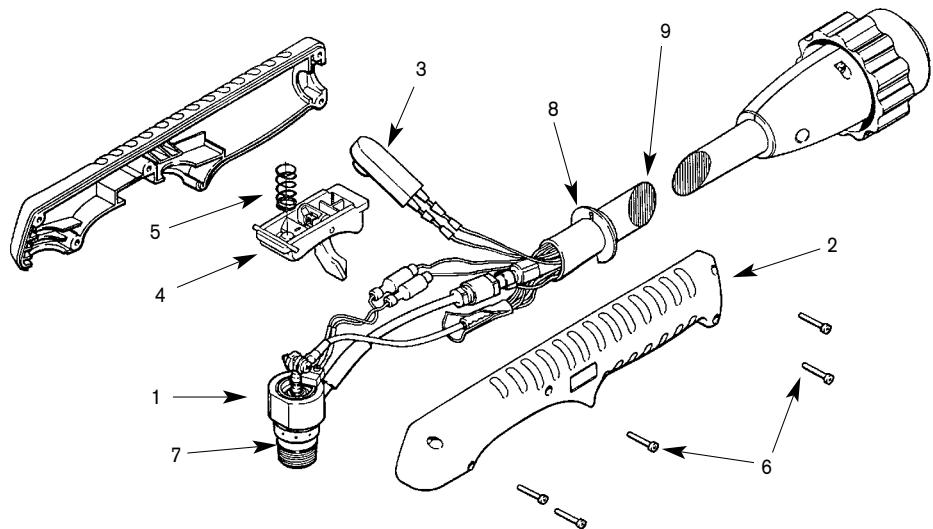
PAC123T torch



	ITEM NUMBER	PART NUMBER	DESCRIPTION	QUANTITY PER PACKAGE
Shielded parts	1	120828	Shield	1
	2	120600	Retaining Cap	1
	3	120826	Nozzle	5
	4	120573	Electrode	5
	5	120576	Swirl Ring	1
Shielded gouging parts	6	120608	Shield, Gouging	1
	2	120600	Retaining Cap	1
	7	120831	Nozzle, Gouging	5
	4	120573	Electrode	5
	5	120576	Swirl Ring	1
Unshielded parts	8	120303	Deflector	1
	2	120600	Retaining Cap	1
	9	120606	Nozzle, Pipe Saddle, 35 Amp	5
	10	120574	Electrode, Extended	5
	5	120576	Swirl Ring	1
FineCut™ parts	8	120303	Deflector	1
	11	220326	Deflector, CE	1
	2	120600	Retaining Cap	1
	12	220330	Nozzle	5
	10	120574	Electrode	5
	13	220332	Swirl Ring	1

Note: The nozzles and swirl rings shown must be used as a set.

Powermax600 PAC123T safety trigger torch assembly



PAC123T torch

For improved performance,
we recommend retrofitting
with the RT60 torch
(see page 33).

ITEM NUMBER	PART NUMBER	DESCRIPTION
	086001 ^	PAC123T Hand Torch Assembly, without QD* 15' / 4.6 m ++
	086002 ^	PAC123T Hand Torch Assembly, without QD* 25' / 7.6 m ++
	086003 ^	PAC123T Hand Torch Assembly, without QD* 50' / 15.2 m ++
	086023 ^	PAC123T Hand Torch Assembly with QD* 15' / 4.6 m **
	086024 ^	PAC123T Hand Torch Assembly with QD* 25' / 7.6 m **
	086025 ^	PAC123T Hand Torch Assembly with QD* 50' / 15.2 m **
1	120570	Torch Main Body with Switch
2	001288	Handle, (includes both halves)
3	128377	Kit: Switch Repair
4	002244	Safety Trigger Assy
5	027254	Trigger Spring
6	075339	Screw, #4 x 1/2" (five required)
7	044016	O-Ring, Buna - N 90 Duro
8	004764	Retaining Ring, Gutcha
9	129475	Torch Leads, without QD* 15' / 4.6 m ++
9	129476	Torch Leads, without QD* 25' / 7.6 m ++
9	129477	Torch Leads, without QD* 50' / 15.2 m ++
9	129599	Torch Leads with QD* 15' / 4.6 m **
9	129600	Torch Leads with QD* 25' / 7.6 m **
9	129601	Torch Leads with QD* 50' / 15.2 m **

^ Assembly includes consumables

* QD = Quick Disconnect

++ Only for use with 230 V and 400 V systems.

** Only for use with 208 - 240 V and 480 V systems.