

# Hypertherm®

## powermax1650® G3 SERIES™

### Hand torch parts

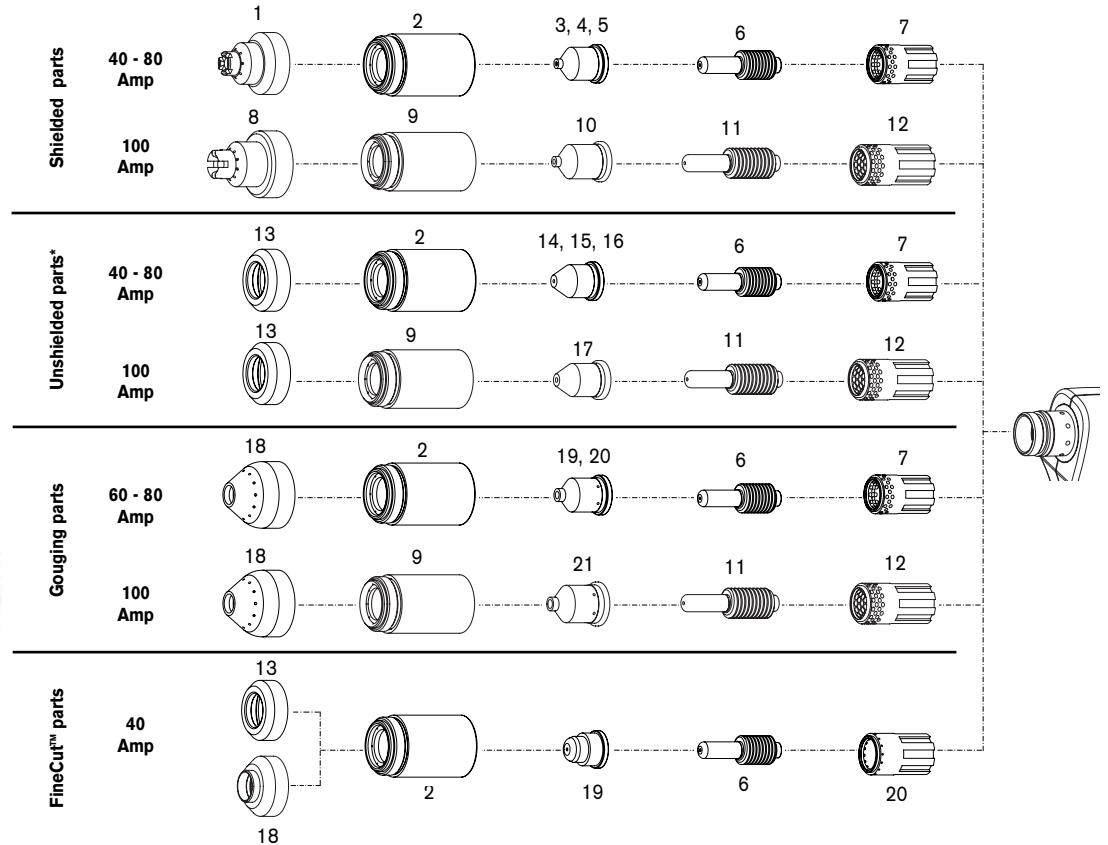
#### T100 consumables



Powermax1650

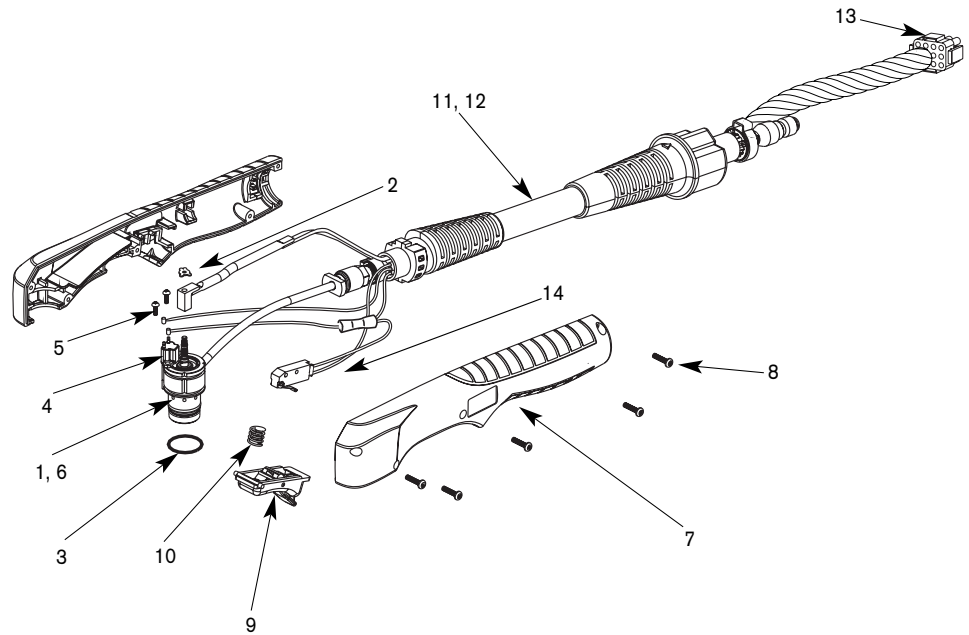


T100 torch



	DESCRIPTION	100 AMP		80 AMP		60 AMP		40 AMP		QUANTITY PER PACKAGE
		ITEM NUMBER	PART NUMBER	ITEM NUMBER	PART NUMBER	ITEM NUMBER	PART NUMBER	ITEM NUMBER	PART NUMBER	
Shielded parts	Shield	8	220065	1	120929	1	120929	1	120929	1
	Retaining Cap	9	220048	2	120928	2	120928	2	120928	1
	Nozzle	10	220011	5	120927	4	120931	3	120932	5
	Electrode	11	220037	6	120926	6	120926	6	120926	5
	Swirl Ring	12	220051	7	120925	7	120925	7	120925	1
Unshielded parts*	Deflector	13	120979	13	120979	13	120979	13	120979	1
	Retaining Cap	9	220048	2	120928	2	120928	2	120928	1
	Nozzle	17	220064	16	120980	15	220007	14	220006	5
	Electrode	11	220037	6	120926	6	120926	6	120926	5
	Swirl Ring	12	220051	7	120925	7	120925	7	120925	1
Gouging parts	Shield	18	120977	18	120977	18	120977	—	—	1
	Retaining Cap	9	220048	2	120928	2	120928	—	—	1
	Nozzle	21	220063	20	120978	19	220059	—	—	5
	Electrode	11	220037	6	120926	6	120926	—	—	5
	Swirl Ring	12	220051	7	120925	7	120925	—	—	1
FineCut parts	Deflector	—	—	—	—	—	—	13	120979	1
	Deflector, CE	—	—	—	—	—	—	18	220325	1
	Retaining Cap	—	—	—	—	—	—	2	120928	1
	Nozzle	—	—	—	—	—	—	19	220329	5
	Electrode	—	—	—	—	—	—	6	120926	5
	Swirl Ring	—	—	—	—	—	—	20	220327	1

## Powermax1650 T100 safety trigger torch assembly



**T100 torch**

ITEM NUMBER	PART NUMBER	DESCRIPTION	QUANTITY PER PACKAGE
	059264^	T100 Hand Torch Assembly with 25 ft (7.6 m) Lead	
	059270^	T100 Hand Torch Assembly with 50 ft (15.2 m) Lead	
1	128767	T100 Torch Main Body Replacement Kit	1
2	027889	Retaining Clip	1
3	058519	O-ring	1
4	128639	Cap-off Sensor Replacement Kit	1
5	075571	Cap-off Sensor screws	2
6	128768	T100/T100M Torch Head Repair Kit	1
7	128644	Handle Kit	1
8	075586	Handle screws	5
9	002244	Safety Trigger	1
10	027254	Trigger Spring	1
11	128755	25 ft (7.6 m) Torch Lead Replacement Kit	1
12	128752	50 ft (15.2 m) Torch Lead Replacement Kit	1
13	128638	ETR Repair Kit (Regional Repair Centers only)	1
14	128642	Start Switch Replacement Kit	1

**^ Assembly includes consumables**